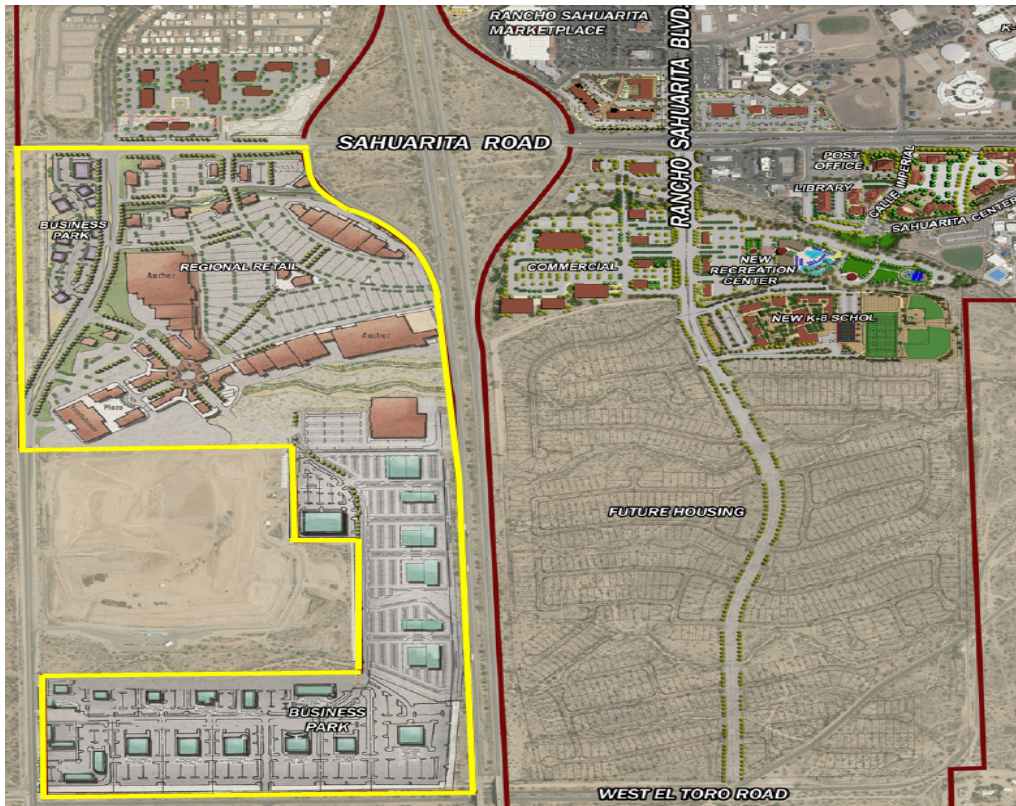


# POWER CENTER/BUSINESS PARK

Commercial Pads Available in Rancho Sahuarita | Sahuarita, Arizona



## POWER CENTER/BUSINESS PARK

- 1 to 180 acres available
- Location adjacent to I-19
- Broad range of commercial, retail big box and industrial uses  
(Turn-key, manufacturing, R & D or Flex space)
- Location is nestled within award-winning master plan community of Rancho Sahuarita
- A highly educated workforce and range of housing nearby
- Excellent schools, recreational amenities, medical, and retail nearby

Contact:

### RANCHO SAHUARITA

Jeremy Sharpe | Chief Operating Officer  
4549 E. Fort Lowell Road | Tucson, AZ 85712  
Office: 520.299.8766  
Email: [jeremy@ranchosahuarita.com](mailto:jeremy@ranchosahuarita.com)



**RANCHO SAHUARITA**  
It's ALL IN YOUR BACKYARD

# Property Overview

## MASTER PLAN OVERVIEW

The Power Center/Business Park at Rancho Sahuarita is a planned commercial center, with various commercial pads available for lease or sale. The site begins at the southeast corner of the intersection of Sahuarita Rd. and La Canada Drive, and continues south to El Toro Road along Interstate 19.

The community of Rancho Sahuarita currently includes over 5,700 homes, 18,000 residents, unique amenities, existing retail and service offerings and hundreds more acres of planned commercial and mixed used space awaiting development.

## DEMOGRAPHICS

<b>SAHUARITA, AZ 85629</b>	<b>1 mile radius</b>	<b>3 mile radius</b>	<b>5 mile radius</b>	<b>7 mile radius</b>
Estimated Population	2,433	21,825	30,818	45,403
Estimated Households	840	7,673	12,239	20,413
Estimated Average Household Income	\$87,089	\$83,542	\$74,493	\$71,634
Estimated Median Household Income	\$80,442	\$78,643	\$69,058	\$65,645
Median Age	34.6	34.2	39.8	47.8
Average Family Household Size	3.3	3.3	3.1	2.8

