

## LAND & BUILD-TO-SUIT OPPORTUNITIES

SEC TUCSON BLVD. & DREXEL ROAD | TUCSON, AZ

# TUCSON AIRPORT COMMERCE CENTER INDUSTRIAL PROJECT

**TOTAL PROJECT SIZE** Up to ±34 Acres

**AVAILABLE SF** ±30,000 - Up to ±300,000 SF

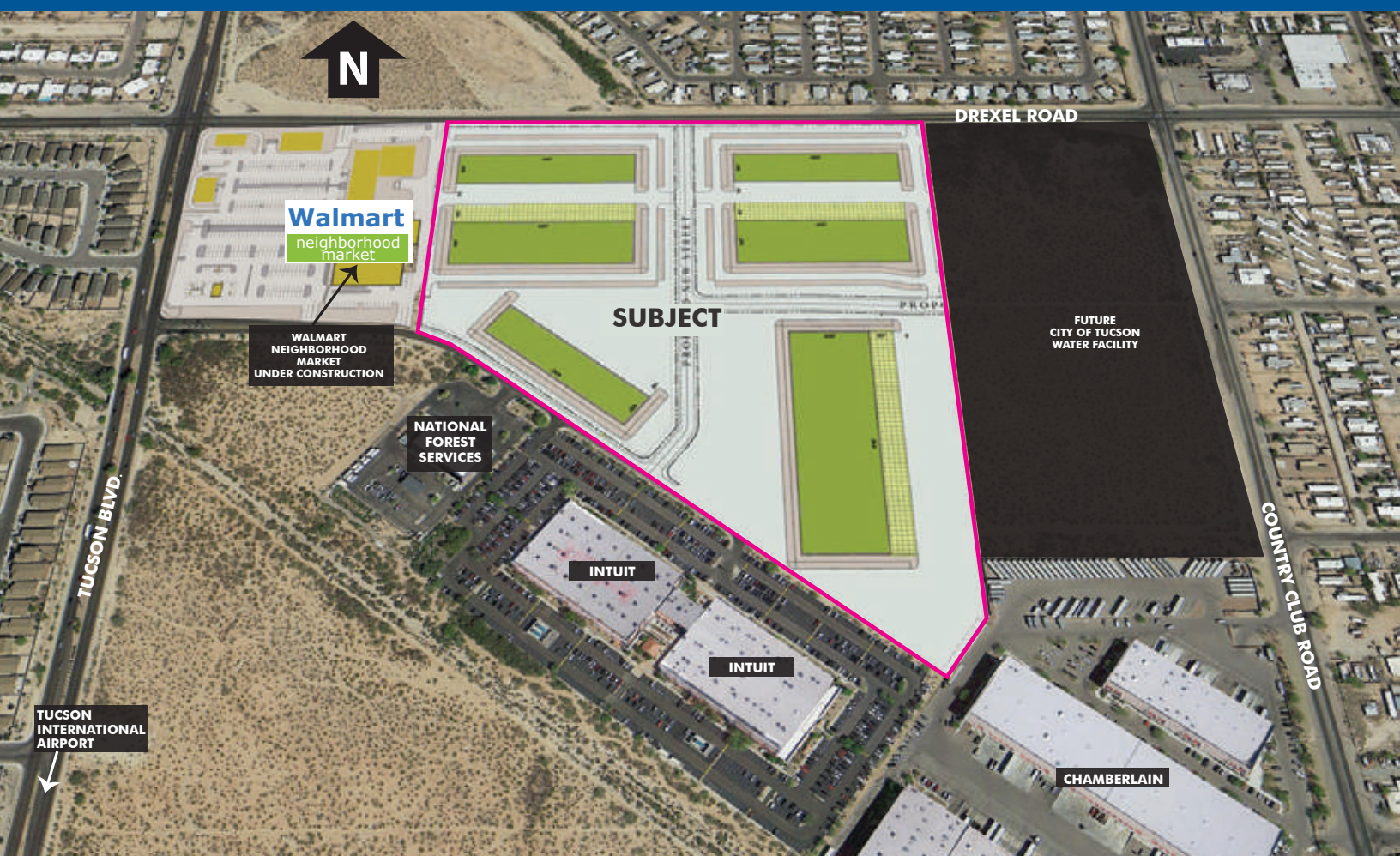
**AVAILABLE LOTS** Minimum 2- ±34 Acres  
(see conceptual site plan)

**PRICE** Call for pricing

**ZONING** P-I, Park Industrial (City of Tucson)  
I-1, Light Industrial (City of Tucson)

### COMMENTS

Site plan can be modified to accommodate multiple lot size variations, minimum ±2 Acres (see conceptual site plan below)



### FOR MORE INFORMATION CONTACT:

#### BILL DIVITO

+1 520 321 3339  
bill.divito@cbre.com

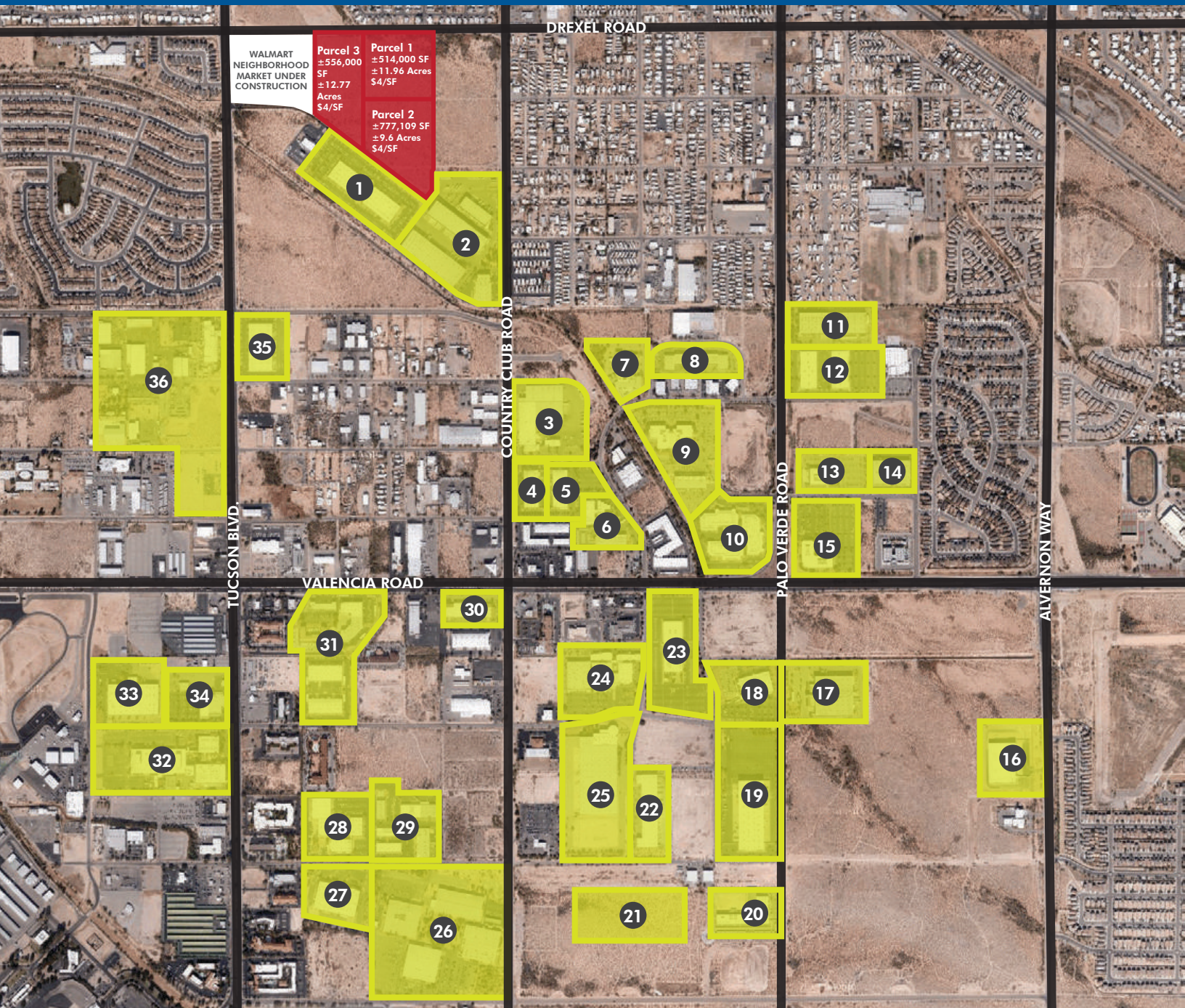
#### JESSE BLUM

+1 520 321 3335  
jesse.blum@cbre.com

# CBRE



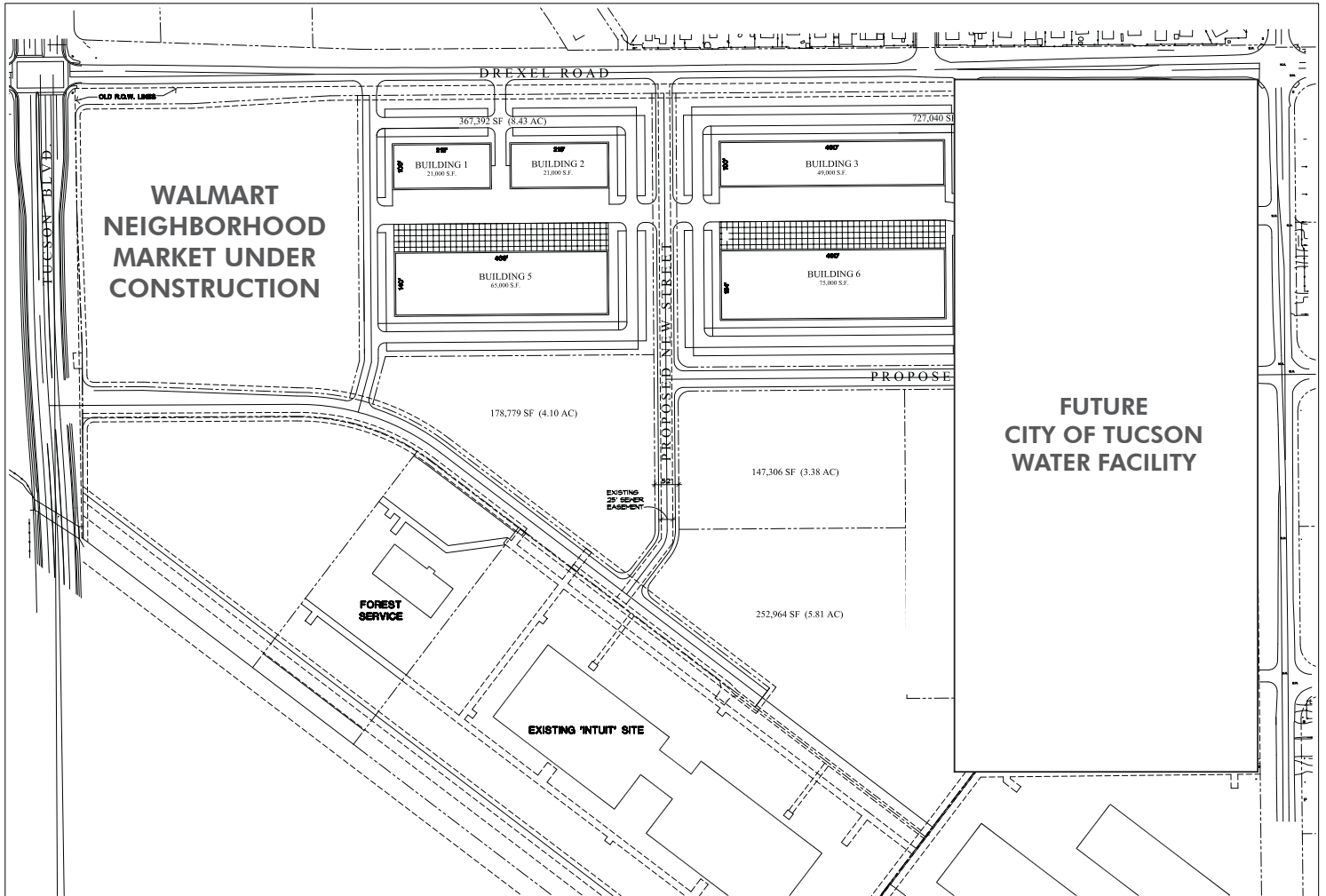
# TUCSON AIRPORT COMMERCE CENTER



## AIRPORT INDUSTRIAL SUBMARKET

- |                               |                    |                           |                                   |
|-------------------------------|--------------------|---------------------------|-----------------------------------|
| 1 Intuit                      | 11 Cobalt Partners | 21 FedEx                  | 31 Bay Colony Tech Center         |
| 2 East Group                  | 12 Raytheon & 4D   | 22 Rockefeller            | 32 Campus at Tucson International |
| 3 Pepsi Cola Bottling Company | 13 Davis           | 23 Freeport MacMoran      | 33 2201 Medina Business Park      |
| 4 Ron Brown                   | 14 CMOP            | 24 Universal Navigation   | 34 Solar Industries               |
| 5 Infinity                    | 15 HealthCare      | 25 Lisa Frank             | 35 Synchronis Technology          |
| 6 Modular Mining              | 16 Tire King       | 26 Tucson Commerce Center | 36 Caid Industries                |
| 7 3321 E. Global Loop         | 17 AZ Container    | 27 Zygo Corp.             |                                   |
| 8 TIBC Tech Center            | 18 Red Cross       | 28 U of A Physicans       |                                   |
| 9 Raytheon                    | 19 East Group      | 29 Tucson Airport Center  |                                   |
| 10 Britannia                  | 20 GSA/DEA         | 30 DES                    |                                   |

## CONCEPTUAL SITE PLAN



NOT TO SCALE  
MEASUREMENTS APPROX.  
PLAN IS SUBJECT TO CHANGE

### FOR MORE INFORMATION CONTACT:

**BILL DIVITO**

+1 520 321 3339

bill.divito@cbre.com

**JESSE BLUM**

+1 520 321 3335

jesse.blum@cbre.com