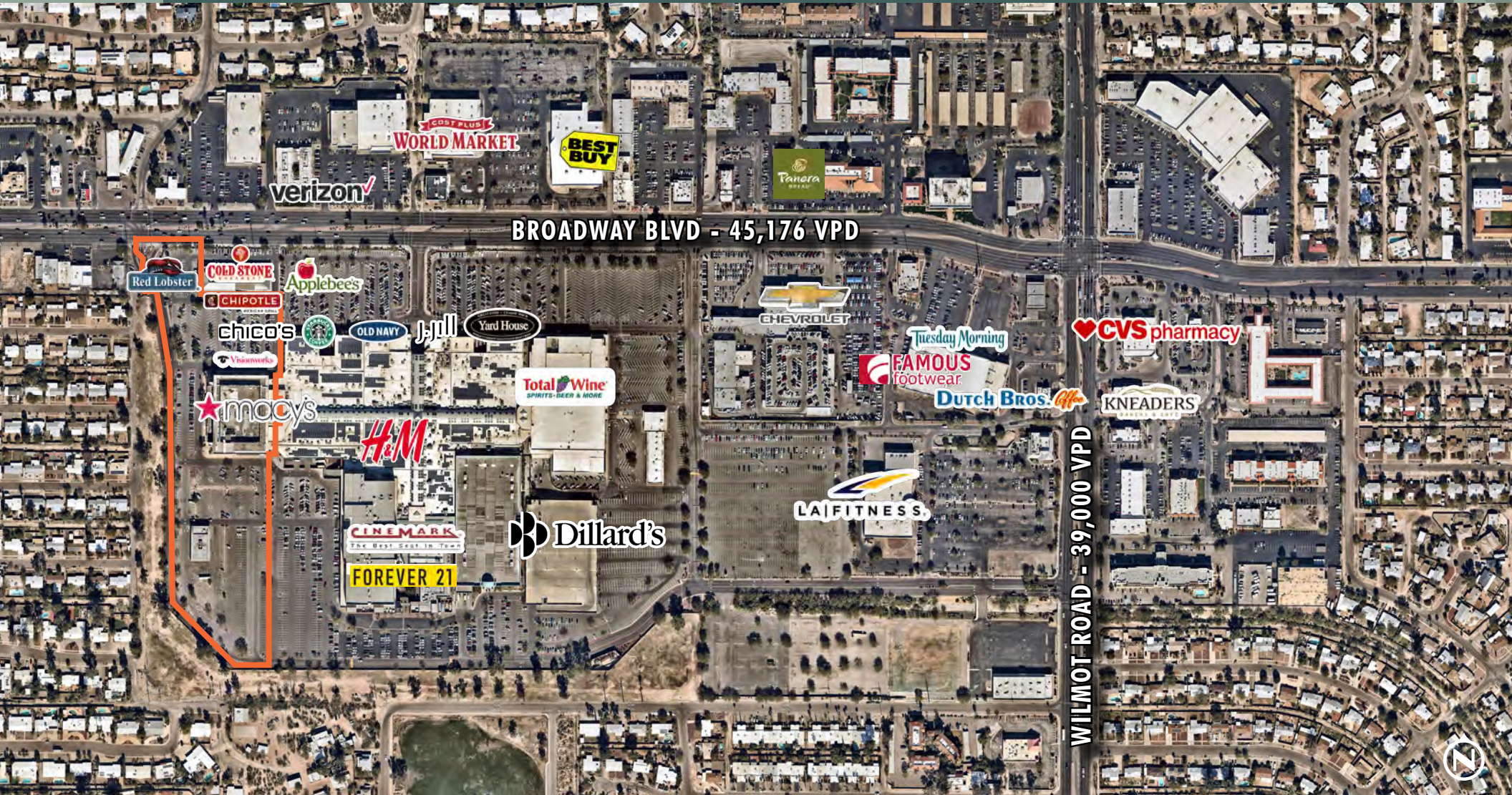


FOR LEASE

ANCHOR SPACE AT PARK PLACE MALL

5850 - 5860 E. Broadway Blvd | Tucson, Arizona 85711



PROPERTY OVERVIEW

AVAILABILITY	5850 E. Broadway Blvd.	5860 E. Broadway Blvd.
SIZING	±153,511 SF	±5,455 SF
PRICING	CALL FOR PRICING INFORMATION	
TOTAL PARCEL SIZE	± 440,130 SF	

PROPERTY HIGHLIGHTS

- Excellent location at Park Place Mall
- Major retail hub at Broadway Boulevard and Wilmot Road
- Diverse mix of restaurant, retail and service uses
- Redevelopment opportunity possible
- C-3 Zoning

DEMOGRAPHICS

Source: Eseri, 2018

	3 MILES	5 MILES	10 MILES
2019 Est. Population	108,748	262,813	631,472
Average HH Income	\$43,370	\$48,279	\$57,659
Daytime Population	137,218	336,294	710,247

TRAFFIC COUNTS

BROADWAY BLVD.	45,176 VPD
WILMOT ROAD	39,000 VPD

Source: MPSI, 2017





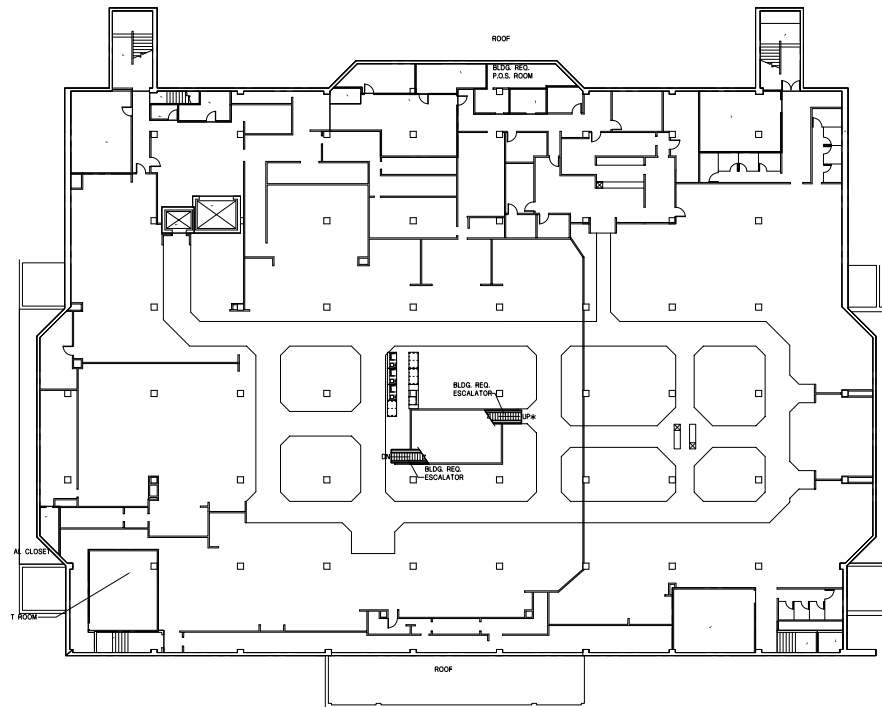
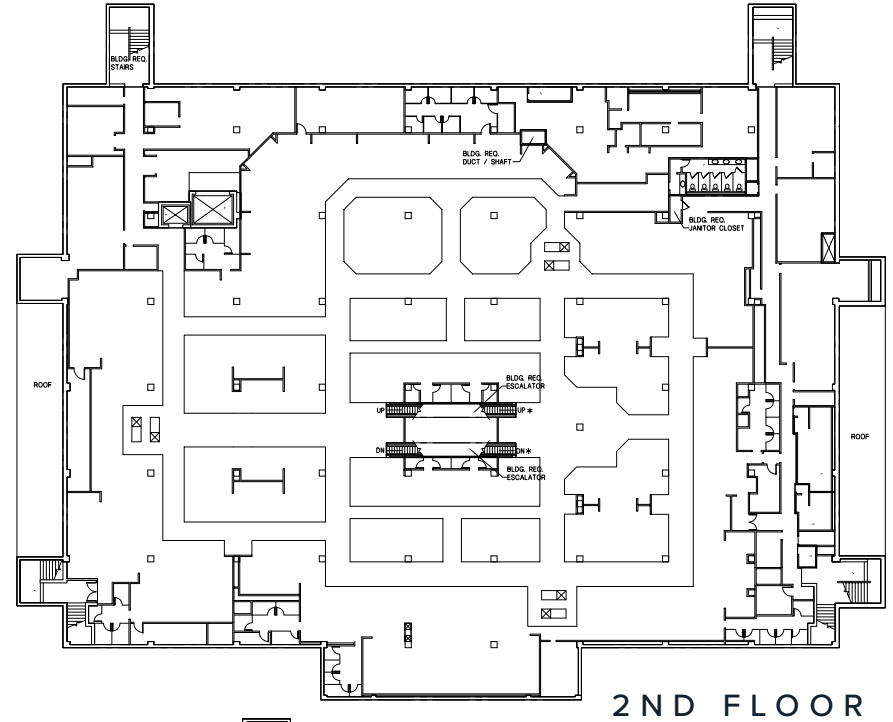
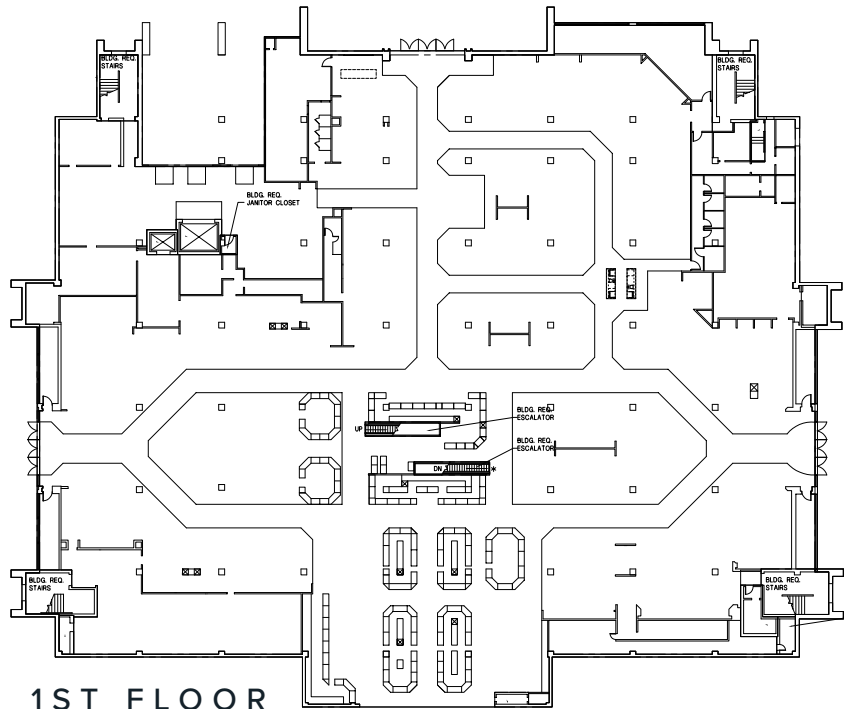
TRADE AREA PROFILE

2019 Population	657,619
2024 Projected Population	677,200
2019 Households	265,041
2024 Projected Households	273,214
Average Household Income	\$67,998
2023 Projected Average Household Income	\$78,474

PARK PLACE MALL

Park Place is located on one of the strongest retail corridors in Tucson, providing shoppers with a convenient single-level format that features the best shopping, dining and entertainment in the area.





FLOOR PLANS

FOR LEASE

ANCHOR SPACE AT PARK PLACE MALL

PLEASE CONTACT:

PETE VILLAESCUSA

First Vice President
+1 520 323 5112
peter.villaescusa@cbre.com

JESSE PERON

Senior Associate
+1 520 323 5130
jesse.peron@cbre.com

MICHAEL J.U. MONAHAN

Vice Chairman
+1 212 984 6665
michael.monahan@cbre.com

© 2019 CBRE, Inc. All rights reserved. This information has been obtained from sources believed reliable, but has not been verified for accuracy or completeness. You should conduct a careful, independent investigation of the property and verify all information. Any reliance on this information is solely at your own risk. CBRE and the CBRE logo are service marks of CBRE, Inc. All other marks displayed on this document are the property of their respective owners, and the use of such logos does not imply any affiliation with or endorsement of CBRE. Photos herein are the property of their respective owners. Use of these images without the express written consent of the owner is prohibited.