



FOR LEASE

±38,464 SF
OFFICE BUILDING

800 E. WETMORE RD. • TUCSON, ARIZONA 85719

DIAMOND
VENTURES

CBRE

PROPERTY INFORMATION

DESCRIPTION

- ±38,464 RSF 2-story professional office building located at the base of the foothills.
- Prominent building and monument signage
- Great outdoor patio/coworking area
- Extensive amenities nearby (see location map)
- Elevator
- Abundant parking (184 Spaces and 94 Covered) and (4.78/1000 Total and 2.47/1000 Covered)
- Secured outdoor storage/parking area for company vehicles
- Locked bicycle yard



SPACES AVAILABLE

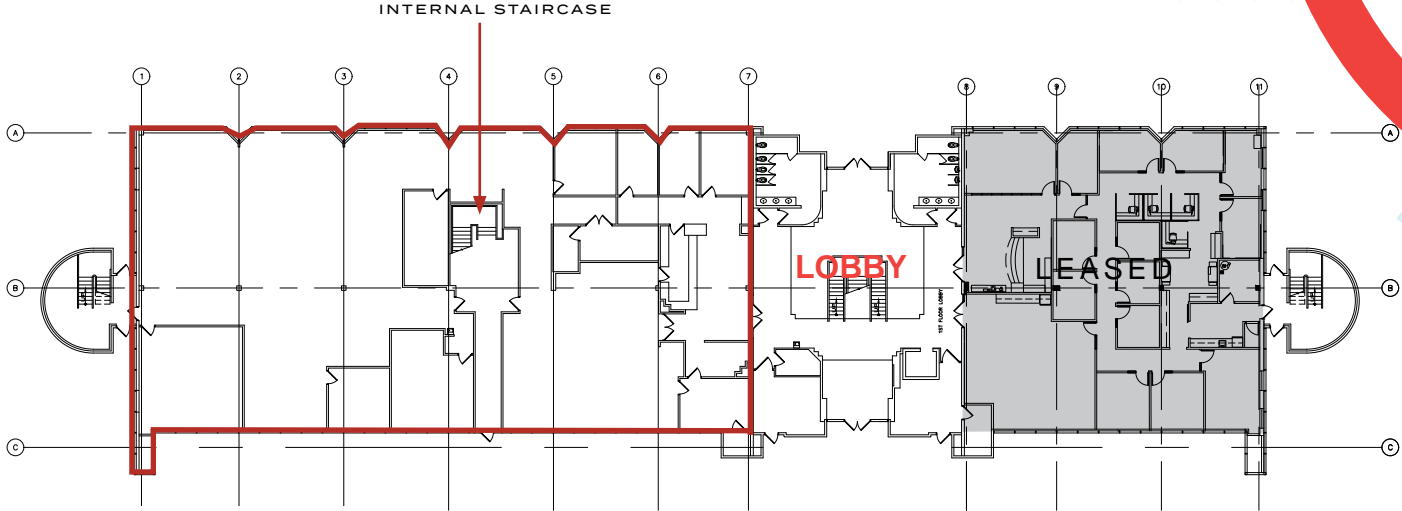
SPACES AVAILABLE	
SUITES/SIZES	First Floor: Suite 100: ±12,999 RSF*
	2nd Floor: Suite 200: ±12,999 RSF*
LEASE RATE	\$22.50/RSF, Full Service



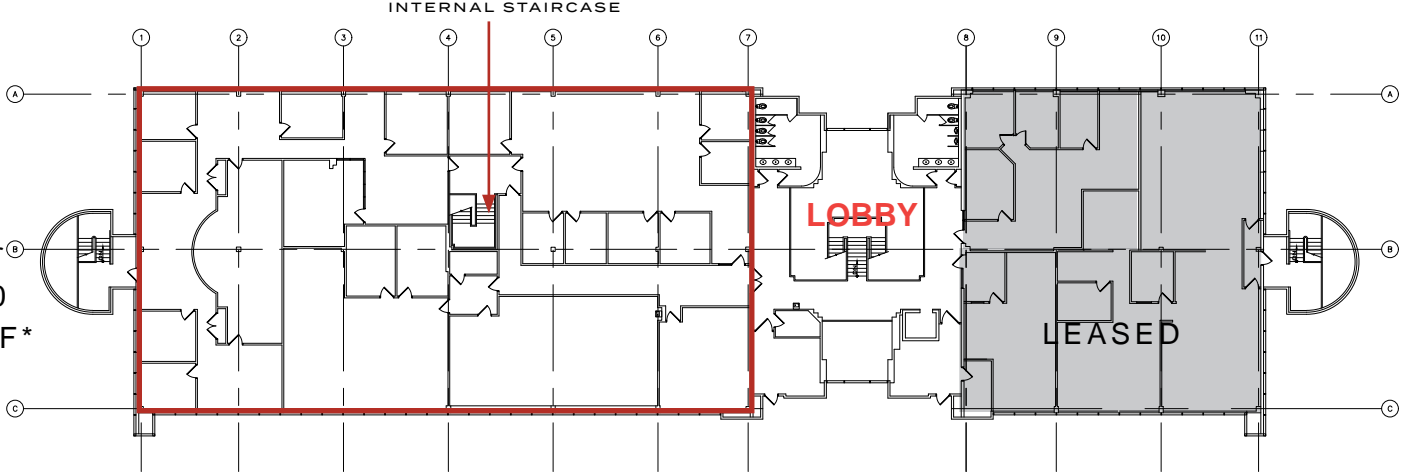
* COMBINES TO ±25,998 SF AND CONNECTED BY A PRIVATE, INTERNAL STAIRCASE

FLOOR PLANS

1st Floor
SUITE 100
±12,999 RSF*



2nd Floor
SUITE 200
±12,999 RSF*

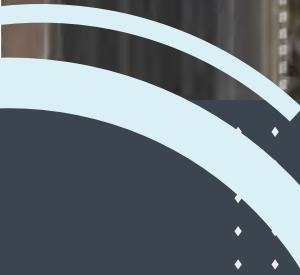
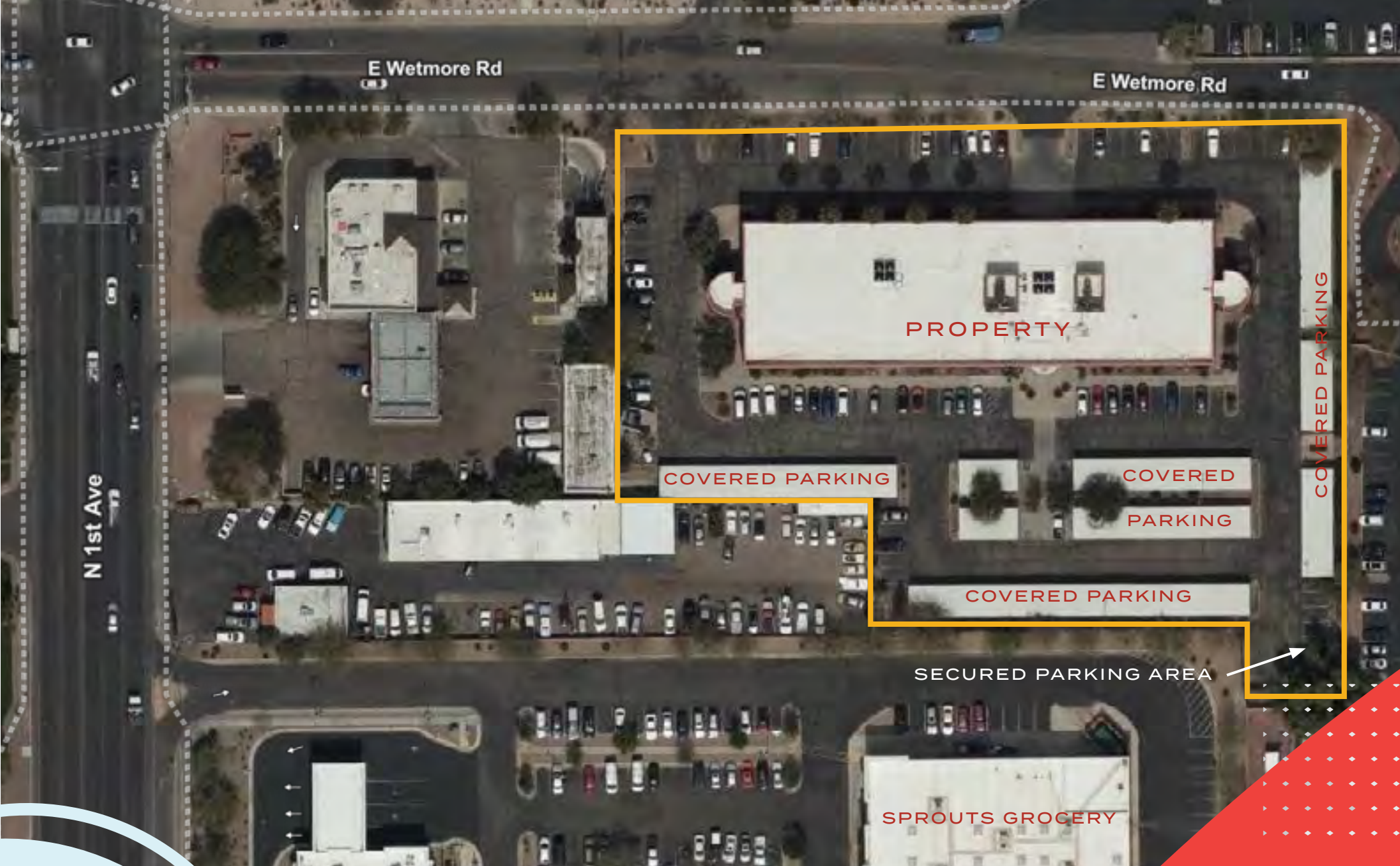


* COMBINES TO ±25,998 SF AND CONNECTED BY A PRIVATE, INTERNAL STAIRCASE

FLOOR PLANS NOT TO SCALE. MEASUREMENTS APPROXIMATE. 

SITE PLAN

SITE OUTLINE NOT TO SCALE

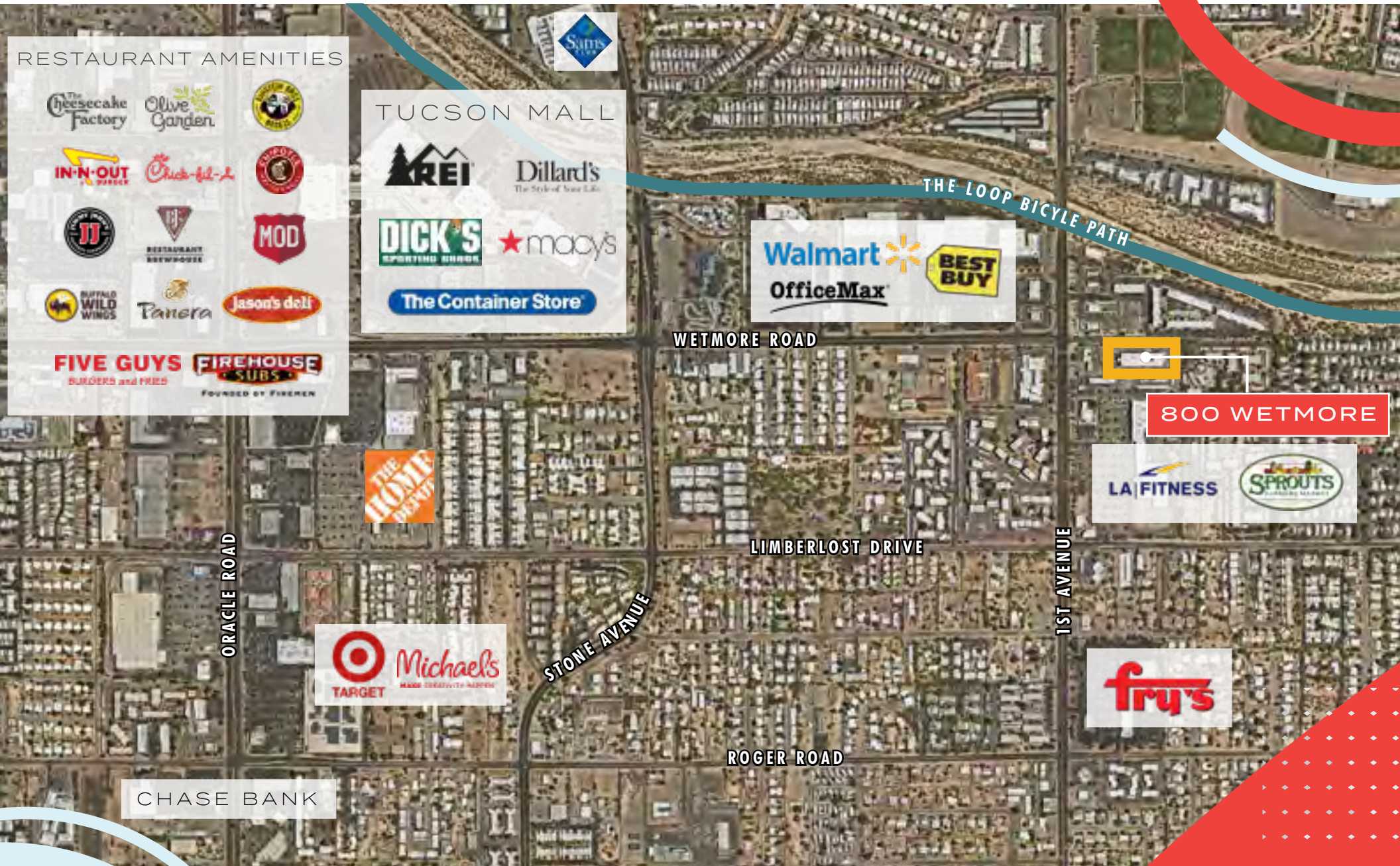


DIAMOND
VENTURES

CBRE

LOCATION MAP

SITE OUTLINE NOT TO SCALE



RESTAURANT AMENITIES

The Cheesecake Factory
Olive Garden
IN-N-OUT
Chick-fil-A
MOD
Jason's Deli
Five Guys
Firehouse Subs

TUCSON MALL

KREI
Dillard's
DICK'S SPORTING GOODS
macy's
The Container Store

800 WETMORE

CHASE BANK

DIAMOND VENTURES

CBRE



CONTACT US

DAVID MONTIJO
First Vice President
+1 520 323 5136
david.montijo@cbre.comdavi

DAMIAN WILKINSON
+1 520 323 5193
damian.wilkinson@cbre.com

© 2021 CBRE, Inc. All rights reserved. This information has been obtained from sources believed reliable, but has not been verified for accuracy or completeness. You should conduct a careful, independent investigation of the property and verify all information. Any reliance on this information is solely at your own risk. CBRE and the CBRE logo are service marks of CBRE, Inc. All other marks displayed on this document are the property of their respective owners, and the use of such logos does not imply any affiliation with or endorsement of CBRE. Photos herein are the property of their respective owners. Use of these images without the express written consent of the owner is prohibited.

